



Ⓜ@,¾,ñ,¿,á,ñ,lfpf^[]fSf<ft[]@,î[][,¶,â,ñ,P[]D,P[]@

TAB02336@niftyserve.or.jp
KU5M-FJI@asahi-net.or.jp

Ⓜ@,æ,æ,±,»,ç,ç,Á,µ,á,ç,Ü,µ,½[]B,±,±,Í Danchan's Golf Club
[]Afp[][,R,U,lfpf^[]fSf<ft[]ê—pfSf<ft[]ê,Å,·[]B,“<q—l,í,à,¿,è,ñ,²‘¶,¶,ì,±
,Æ,Æ‘¶,¶,Ü,·,ª[]A“-fSf<ft[]ê,ì”„,è•” ,í[]A—V,Ô,½,Ñ,ÉŽp,ð•í,¡,éfOfŠ[]f“ ,Å,²,´,ç
,Ü,·[]B,±,±,ª•É-¼[]u•sŽv<c,lfOfŠ[]f“[]v,ÆÆÄ,î,ê,Ä[]A[]<C,ð[]W,ß,Ä,ç
,é,ì,à[]A,Ð,Æ,¡,É,» ,ì•ïCE¶Ž©[]Ý,ÈfOfŠ[]f“ ,ì,“ ,©,° ,Å,²,´,ç,Ü,·[]B
Ⓜ@,³,Ä[]A, ,È,½—l,í,ç,ì,æ,æ,ÈfR[]fX,ª,“[]D,Ý,Å,²,´,ç,Ü,·,©[]H[]@,È,¾,ç,©,ÅfŠf
%ofbfNfX,µ,ÄŠy,µ,ß,é,æ,æ,ÈfR[]fX,ª,æ,è,µ,ç
,Å,·,©[]H[]@,» ,é,Æ,à[]A<Z[]p,ìCEÄŠE,ðŽŽ,¹,éfRfu,¾,ç, ,ìfR[]fX,É,ç,½,µ,Ü,µ,â,æ
,©[]H[]@“-fSf<ft[]ê,ì%oi^õ—l,ì“Á“T,Æ,µ,Ä[]A,ç,ì,æ,æ
,ÈfOfŠ[]f“ ,ð[]W,ß,½fR[]fX,É,·,é,©,ð,²Ž©—R,ÉŽw’è,µ,Ä,ç,½,¾, ,é,±
,Æ,Æ,È,Á,Ä,“ ,è,Ü,·[]B,½,¾,µ[]ACEÄ[]X,lfOfŠ[]f“ ,ìCE`ó,ì[]x,©,ÉŽw’è,í[]³,Á,Ä,“ ,è,
Ü,¹,ñ[]B,» ,±,í[]u•sŽv<c,lfOfŠ[]f“[]v,Æ,ç,æ,±,Æ,Ä[]A,ç,ì,æ,æ,ÈfOfŠ[]f“ ,ª,Å,« ,ª,é,
ì,©,í[]Afr[]fX,É[]o,Ä,©,ç,ì,“Šy,µ,Ý,Æ,ç,æ,±,Æ,É,È,Á,Ä,“ ,è,Ü,·[]B
Ⓜ@[]E[]E[]E,» ,è,Ä,í[]Afr[]fX,ì,²Žw’è,à[]³,è,Ü,µ,½[]B,µ,î,ç,-
f[]fr[][,Å,““Ö,¿%o°,³,ç[]B,Ü,à,È,[]AfvfCEfCS]Žn,Å,²,´,ç,Ü,·[]B

—V,Ñ•û
f[]fif...[]
“ ,í,è,É
[]L[]

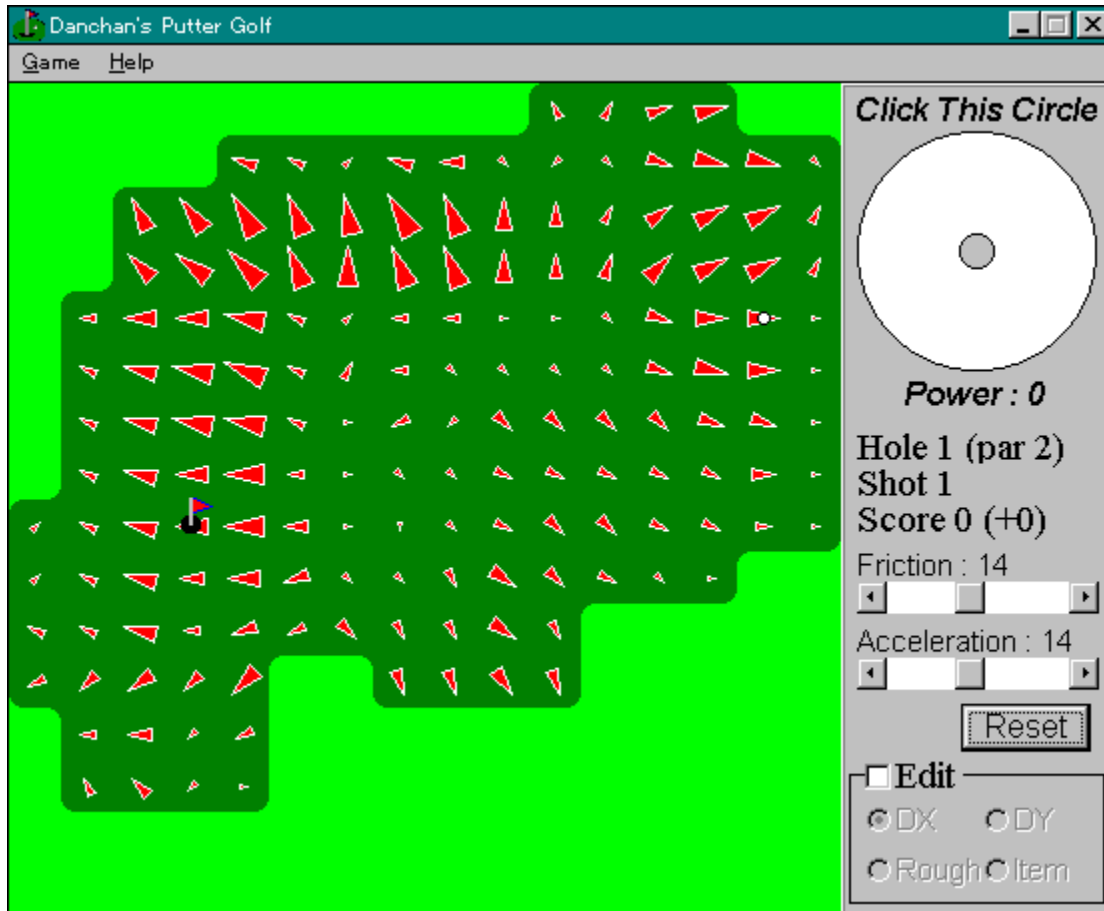
How to play (in English)

f’^ó,,

Ⓜ@[]u,¾,ñ,¿,á,ñ,lfpf^[]fSf<ft[]v,Í MS-Windows 3.1 /95 —p,lfTfŠ[]fEfFfA,Å,·[]B[]æ
—p,Å,ìŽg—p,ð[]ce,«[]A-³[]ž,Å,ì•¡[]>[]A[]Ä”z•z,É,Ä,ç,Ä,í[]ìŽÖ,É“Á,É’f,è,È,Ž©—
R,É[]s,Á,Ä,ç,½,¾,ç,ÄCE<[]\,Å,·[]B,È,“[]A-{f[]ftfg,ðŽg—p,µ,½,±,Æ,É,æ,é, ,ç,ä,é¹Š
Q,É’í,µ,Ä[]A[]ìŽÖ,í[]ó”C,ð•%o,ç,Ü,¹,ñ[]B,²—¹[]³,¾,³,ç[]B
Ⓜ@,Ü,½[]A-{f[]ftfg,É,Í Borland Delphi for Windiws —p,lf
[]fXftf@fCf<,ª“Y•t,³,è,Ä,ç,Ü,·[]B-{f[][]fXftf@fCf<,É,Ä,ç,Ä,à’~[]CE ,ð•úŠü,·,é,à,ì,Å,
í, ,è,Ü,¹,ñ,ª[]A[]ìŽÖ,ì~[]CE ,ð[]NŠQ,µ,È,ç”í’í,Å[]A-{f[][]fXftf@fCf<,ðŽQ[]Æ,µ,Ä,ç
,½,¾,ç,Ä[]\,ç,Ü,¹,ñ[]B

—V,Ñ•û

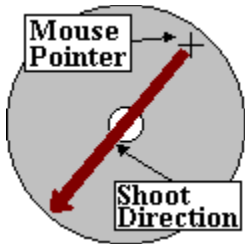
□@□u,¾,ñ,¿,á,ñ,lfpf^□[fSf<ft□v,ð<N“®,. ,é□iDpgolf.exe ,ðŠj,□j,Æ□AZÿ,ì,æ,κ,È
%oæ-Ê,ª•\Zì,¾,ê,Û,·□B



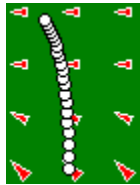
□@fQ□[f€,ì-Ú“l,í,Æ,Ä,àŠÈ’P□A□uf{□[f<,ð’Á,Á,Ä“]
,ª,μ,Ä□Ajjfbfv,É“ü,ê,é□v,¾,¯,Ä,·□BftfB□[f<fh,í□AfOfŠ□[f“□i^Ä,ç—î□F□j,Æf%oft□i
%o©—î□F□j,©,ç,Ä,«,Ä,ç,Ä□A,» ,ê,¼,ê□A

□@□@fOfŠ□[f“...f{□[f<,ª“],ª,è,â,·,ç,ªÆX,ç,Ä,ç,é
□@□@f%o□□@□ft....□...•½,¾,ªf{□[f<,ª,Û,Æ,ñ,Ç“],ª,ç,È,ç

□@,Æ,ç,κ’Á’¥,ª, ,è,Û,·□B,» ,ê,Ä,í□Af{□[f<,ð’Á,Á,Ä,Ý,Û,μ,â,κ□BfEfBf“fhfE
%oE□ã,É, ,éf□[fifc,ì,æ,κ,È%o~ ,ª□ufvfjfbfgfT□[fNf<□v,Æ,ç,ç□A,±,±
,ðNfŠfbfN,·,é,±,Æ,Áf{□[f<,ð’Á,¿,Û,·□B



@, ±, Ì, æ, ¼, É Af} fE fX, ð fN fŠ fbfN, µ, ½ 'n" _ ,Æ
 %o~ , Ì' t S, ð CE < , Ô • û CE ü, É f { [f < , ð ' Á, Ì o, , ð B %o~ , Ì' t S, © , ç %o " , , È, é, Ù, Ç A < ,
 ' Á, Ì o, , ±, Æ, É, È, è, Ù, · B Ì ' Á, Ì o, , < , Ì A, , © %o , Ì u Power v, É • Ž , , è, Ù, · B



@ f { [f < , ð f O f Š [f " , Ì ä, ð " , ð , Á, Ä, ç
 , é Š Ö, Ì Af O f Š [f " , Ì CE X, « , È, æ, Á, Ä f { [f < , Ì < O Ö, ð È, ð , è, Ù, · B f O f Š [f " Ì ä, É • \
 Ž , , è, ½ Ö, ç, , ð , Ñ CE ^ , ð CE X, « , ð Ž , , µ, Á, ç, Ù, · B f { [f < , Ì A, -
 , ð , Ñ, Ì æ, Ì • û CE ü, É < È, ð , è, Ù, · B ' ä, « , È, , ð , Ñ, ð • Ž , , è, Á, ç, é è è Š, Ù, Ç A CE X, « , ð ' ä, « , -
 , È, Á, Ä, ç, Ù, · B

@, ¼, Ù, f { [f < , ð f } fbfv, É " ü, è, é, ±
 , Æ, ð , Á, « , è, Ì A Ž Ÿ, Ì f z [f < , É Ì i, Ý, Ù, · B f z [f < , Ì ' S " , Á, P, W, , è A, , x, Ä f p [[i < K ' è ' Á " [
 j, Q, Æ, È, Á, Ä, ç, é, Ì, Á A, R, U ' Á ^ È " à, Á, P, W f z [f < , ð
 %o ñ, è Ø, è, Ì f A f " f _ [f p [, Æ, È, è, Ù, · B



@, P, W f z [f < %o ñ, è Ì , Ì , é, Æ A, ±, Ì, æ, ¼, É f X f R f A, ð • Ž , , è A V f R [f X Ì Ì - %o æ -
 È, É Ž © " ® " Ì, É ^ Ú s, µ, Ù, · B

@, È, " A %o æ - È %o E %o , É, Q, Á, Ì f X f N f [f < f o [, ð , è, Ù, · B, ±, è, Ì Af Q [f € Ì ä, Ì =
 € Ž CE W " [f { [f < , Ì " , ð , è • û, È %o e < j, , é j, Æ
 %o Á ' - " x [f { [f < , Ì < È, ð , è • û Af O f Š [f " , Ì CE X, « , Ì
 %o e < j " x j, ð • Ì X, , é, ½, ß, Ì, à, Ì, Á, · B, » , Ì %o , Ì u Reset v f { f ^ f " , ð %o Ÿ, , Æ A [
 %o Š ú [Y ' è ' Ì, È - ß, è, Ù, · B

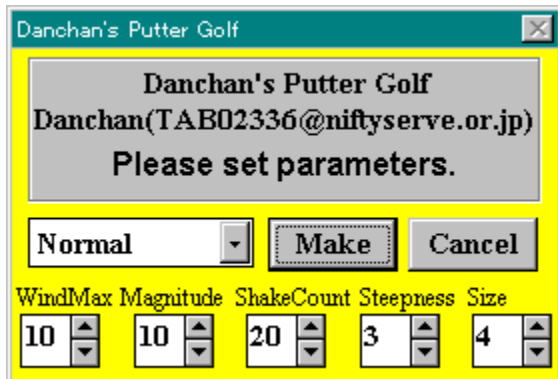
V, µ, ç f R [f X, ð Ì , è, ½, ç è Ì , É, Ì
 f R [f X, Ì • Ö W • û - @
 Ì Ì - , µ, ½ f R [f X, Ì • Ö • û - @

fXfNf[] [f<fo[] [,ª[]¶,É,ç,,Ù,Ç-€ŽCÆW[]",ª[]¬,³,[]i,Â,é,Â,é,É[]j,È,è[]A%oE,É[]s,-
,Ù,Ç'â,«,[]i,·,×,è,É,,[]j,È,è,Û,·[]B

fXfNf□□[f<fo□[,^a□¶,É,ç,,Ù,Ç%oÁ'¬“x,^a□¬,³,□i<È,^a,è,É,,□j,È,è□A%oE,É□s,,Ù,Ç'â,«,-
□i<È,^a,è,â,·,□j,È,è,Ü,·□B

☐VfR☐[fX,ì☐ì☐~

☐@f☐ffj...☐[, ©, ç [Game] -> [New] , ð'ì'ð, μ, ½☐ê☐#☐A, Ü, ½, í'S, P, Wfz☐[f<, ð
%oñ, è, «, Á, ½☐ê☐# , É, í☐AZÿ, ì, æ, x, Éf_fCfAf☐fOf{fbfNfX, a•\Ž|, ³, ê, Ü, .☐B



☐@☐uMake☐vf{f^f“ , ì☐¶, É, , éfRf“f{f{fbfNfX, ì't, ©, ç☐A☐D, Ý, ìfz☐[f<, ìf^fCfv, ð☐Ý'è, μ, Ü, .☐Bf_fCfAf☐fOf{fbfNfX, ì%oo°•û, É, S, Á•Á, ñ, Á, ç, é☐”Žš, í☐Afpf%of☐☐[f^, ð☐x, ©, -☐Ý'è, , , é☐ê☐# , ÉŽg, ç, Ü, .☐B

- Normal.... 'É☐í, ì“í^Õ“x, ìfR☐[fX, ð☐ì☐~ , μ, Ü, .☐B
 - Easy.... ^Õ, μ, çfR☐[fX, ð☐ì☐~ , μ, Ü, .☐B
 - Hard.... “í, μ, çfR☐[fX, ð☐ì☐~ , μ, Ü, .☐B
 - Very Easy.... ”ñ☐í, É^Õ, μ, çfR☐[fX, ð☐ì☐~ , μ, Ü, .☐B
 - Very Hard.... ”ñ☐í, É“í, μ, çfR☐[fX, ð☐ì☐~ , μ, Ü, .☐B
 - Simple
 - Slope.... ŽR, Ü, ½, í', a, P, Á, ¾, -, ìfz☐[f<, ð☐W, ß, ½fR☐[fX, ð☐ì☐~ , μ, Ü, .☐B
 - Random.... f☐f%of☐☐[f^, ð—☐☐” , É, æ, è☐Ý'è, μ, Ü, .☐B
- ☐@f☐f%of☐☐[f^, ì^Ó-j, íŽÿ, ì, Æ, ”, è, Á, .☐B, ±, ê, çf☐f
%of☐☐[f^, í☐AfofŠ☐[f“ , ì'á, «, ³, Æ☐EX, «•û, ð☐E^ , ß, é, ì, ÉŽg—p, μ, Á, ç, Ü, .☐B
- WindMax.... ☐uŽR☐v☐u'j☐v, ì☐L, a, è, ì'á, «, ³(☐...•½•û☐Eü), ì☐Á'á'l
 - Magnitude.... ☐uŽR☐v☐u'j☐v, ì☐, , ³, ìfof%o, Á, «('á, «, , , , é, Æ^Õ, μ, , É, è, Ü, .)
 - ShakeCount.... ☐uŽR☐v☐u'j☐v, ì☐”
 - Steepness.... fOfŠ☐[f“ , ì☐EX, «, ì☐Á'á'l(, ±, ì☐”'l, a☐Á, à“í^Õ“x, É%oe<_j, μ, Ü, .)
 - Size.... fOfŠ☐[f“ , ì'á, «, ³(, O, É, , , é, Æf%of“f_f€TfCfY)

fR[fX,ì•Ù'¶E“Ç,Ýo,µ•û-@

fR[fX,ì•Ù'¶•û-@

□@□u,±,lfR[fX,í-É””,ç□□v,ÆŽv,Á,½fR[fX,í□A•Ù'¶,µ,Ä,“,±,Æ,ª,Å,«,Ü,·□B
□@f□fj...□[,©,ç [Game] -> [Save] ,đ'í'đ,µ,Ä,-
,¾,¾,ç□BfR[fXff□f^,đ•Ù'¶,·,é,½,ß,lf_CfAf□fOf{fbfNfX,ªŠ},«,Ü,·□B
□@“ú•t,ÆŽŽŠŎ,đŽg—p,µ,½ftf@fCf<-¼,ªffftfHf<fg,lf@fCf<-
¼,Æ,µ,Ä□Y'è,¾,è,Ü,·□Bftf@fCf<-¼,íŽ©—
R,É•í□X,Å,«,Ü,·,ª□AŠg'£Žq,í□u.dpg□v,Æ,µ,Ä,“,ç,Ä,¾,¾,ç□iftf@fCf<-
¼,ÉŠg'£Žq,đ,Ä,¯,É,©,Á,½□ê□#□AZ©“®“l,É□u.dpg□v,ìŠg'£Žq,ª,Ä,,ì,Ä-â'è, ,è,Ü,
¹,ñ□j□B
□@,É,“□AfR[fX,đ%ñ,è□l,ì,ÄfXfRfA,ª•\Ž!¾,¾,è,½Æã□A□uSave this course ?
□v,Æ•,ç,Ä,«,Ü,·,ª□A,±,±,Å□uOk□vf{f^f“,đfNfŠfbfN,µ,½□ê□#,à□A“¯—
l,ÉfR[fX,đ•Ù'¶,·,é,±,Æ,ª,Å,«,Ü,·□B

fR[fX,ì“Ç,Ýo,µ•û-@

□@•Ù'¶,µ,½fR[fX,đ“Ç,Ýo,µ,½,ç□ê□#,í□Af□fj...□[,©,ç [Game] -> [Load]
,đ'í'đ,µ,Ä,,¾,¾,ç□B
□@□u.dpg□v,Æ,ç,ªŠg'£Žq,ì,Ä,ç
,½ftf@fCf<,ªfR[fXff□f^,ì“ü,Á,½ftf@fCf<,È,ì,Å□A,»,é,ç,ì't,©,ç“Ç,Ýo,µ,½,çftf@
fCf<,đ'í'đ,µ,Ü,·□B,¿,È,Ý,É□A□udpgolf.dat□v,Æ,ç,ªftf@fCf<□i,±,é,lfQ□[f€□ã,ÄŽg—
p,µ,Ä,ç,é^èŽžftf@fCf<,Å,·□j,à□³□í,ÉfR[fXff□f^,Æ,µ,Ä“Ç,Ýo,·,±,Æ,ª,Å,«,Ü,·□B

□@ŽÀ,í□AfR[fXff□f^ÈŠŎ,lf@fCf<,à-\\-,¾,¹,·,É“Ç,Ýž,ª,±,Æ,ª,Å,«,Ü,·□B-{—
^,lf□[f^ftfCfY,Å, ,é4644fofCfg^È□ã,lf@fCf<,È,ç□Å%ñ,ì4644fofCfg,đŽg—
p,µ,Ä□A4644fofCfg^È%ñ,Å,àftf@fCf<□î•ñ,đ—~—p,µ,Ä□A-³—
□,â,èfR[fX,đ□ì,è,Ü,·□B,ß,¿,á,-
,¿,á,Å□,“î“Ŏ“x,lfR[fX,É,È,é□ê□#,ª,Ü,Æ,ñ,Ç,Å,·,ª□A,¿,á,ñ,Æ—V,x,Ü,·□B

fR[fX,ì•ÒW•û-@

@- {fo [fWf#f" ,ìV<@"\,Æ,μ,Ä AfR [fX,ìGfffBfbfg,ª%oÀ"\,Å,·B%oæ-Ê%oE %oº,ìuEdit v` fFbfNf {fbfNfX,ðf` fFbfN,μ,Ä,,¾,¾,çB



@DX, DY, Rough, Item ,ì,S,Â,ìf%oWfìf {f^f" ,Åf, [fh,ðØ,è'Ö,ì,Ü,·B

EfofŠ[f",ì•ÒW

@DX, DY ,ìf, [fh,Å AfOfŠ [f" ,ìEX,« ,ð%o; •ûCEü(DX) A c•ûCEü(DY) ,²,Æ,É'²® ,μ,Ü,·BfQ [f€%oæ-Êã,Åf} fEfX,ð¶,Ü,½,Í%oEfNfŠfbfN,μ,Ä,- ,¾,¾,çiŠ®'S,É... •½,É,È,é,Æf%oft,É,È,è,Ü,·,ªA,±,é,ÍŽd—ì,Å,·jB @,È, "AShiftfL [,ð%oÿ,·,Æ DX <-> DY ,ìf, [fhØ'Ö,ì,ª,Å,« ,Ü,·B

Ef%oft,ìì-

@Rough f, [fh,É,μ,ÄfQ [f€%oæ-Êã,Åf} fEfX,ðNfŠfbfN,·,é,Æ Af %oft,ðì-,Å,« ,Ü,·B

Ejfbfv^f{ [f<,ì^Ú"®

@Item f, [fh,Å,ì Afjfbfv,âf{ [f<,ð^Ú"® ,¾,¹,é,± ,Æ,ª,Å,« ,Ü,·B ¶fNfŠfbfN,Åjfbfv A%oEfNfŠfbfN,Åf{ [f<,ð^Ú"® ,μ,Ü,·B

@•ÒW,μ,½fR [fX,ð•Ú'¶,·,é,Æ A•ÒWCEä,ì"à—e,Å•Ú'¶,¾,é,Ü,·B

fjff...l

@u,¾,ñ,¿,á,ñ,lfpf^ [fSf<ftv,lfjff... [,íAŽŸ,ì,æ,α,Èfvf“fvf<,È,à,ì,Å,·B

Game

Restart....E»Ý,lfR [fX,đÁ%oï'æ,Pfz [f<j,©,ç,â,è'¼,μ,Û,·B

New....V,μ,çfR [fX,đì□,μ,Û,·B

Save....E»Ý,lfR [fX,đ•Ú'¶,μ,Û,·B

Load....Ú'¶,μ,½fR [fX,đ“Ç,Ýo,μ,Û,·B

Exit....u,¾,ñ,¿,á,ñ,lfpfbfSf<ftv,đl—¹,μ,Û,·B

Help

Index....,±,lfwf<fv,đ•Ž!,μ,Û,·B

About....fo [fWf#f“î•ñ,È,Ç,đ•Ž!,μ,Û,·B

L

@, ±, ±, Å, í, AŽ, ,, ì, ±, ê, Ü, Å, ÌŽ, ð, È, ì, i™, ð, 2^Ä, à, 3, 1, Ä, ç, 1/2, 3/4, «, Ü, ·, Bf, ftfgfEjFfA, Ì, ·, x, ÄftfS[fEjFfA, Æ, È, Á, Ä, ç, Ü, ·, Ì, Å, A, " <CÆy, É, "ŽŽ, µ, , 3/4, 3, ç, B

Windows 3.1 / Windows95—p

CyberLoop

.. ^ê•M, «, ì, è, a, », ±, í, ©, Æ, È, •Y, xfpjfk, ß, , èfpjfk, B

<S<Ê -Onidama-

.. "»'f—Í, Æ<óSÔ" c^ —Í, à—v<, 3, ê, é, A, VŠ' Šo, ì, f~ a• —<L% —Ífpjfk, B
^ê, Ü, É,

.. -f, Ì, "—, 1/2, è"v, ð, —, ·, éfpjfk, B

,D, Á, ¶, ©, çfQ[f€ Shepheld Boy

.. Å'å, P, O, O•C, Ì—r, ð, \$, Ç, ÄŽŽŠÔ" à, É%æ-É, Ì'†
%>, É'Ç, ç, Ž, pfŠfAf^f^fcfQ[f€ B

f}fXf^ [f}fCf"fh•t' ^ —CE^ "d'ì MasCalc

.. Žx—, É, È, ç, È, ç' ^ —CE^ ftfcfY, Å, Af}fXf^ [f}fCf"fh, Å—V, Ô, ±
Æ, à, Å, «, é" d'ì B

-3CEÀ, l, y

.. -À~H, à, RŽŸ, Ç^3, A-3, d—Í<óSÔ, ð, 3, Ü, æ, x, VŠ' Šo, Ì—§'ì-À~HfQ[f€ B

MZ3 for Windows

.. \$, Ç, ÄŽŽŠÔ, à, f, f" fXf^ [, à, È, ç, fVf"fvf<, È—§'ì-À~H, Bftf<fj% [f, [fh•t, < B

CRUSH GAME

.. Ì-Ø, ð, Ì, Ý, ä, °%ÿ, µ, Å, Ô, ·, A, Æ, ç, x, f< [f<, Å, Rf"fsf... [f^, Æ'í, ·, éfpjfk, B
u, Ç, v, Ž, Ž, v for Windows

.. fgf%of"fv, Ì^è, Ì—V, Ñ, Ì, Ç+ [fQ [f€, ð, fx [fX, É, µ, 1/2, Ž, v, Ç^fpjfk, B

Win, µ, è, Æ, è

.. fvf, Ç, f, ,, [, Ì, Ž, g, Á, 1/2, Ç, 3/4—t, ð, Šo, Ì<, , È, é, µ, è, Æ, è, fQ [f€ B, Ž, q^ç, Ä, f, [fh•t, < B

D Out! for Windows

.. Žs" Ìfpjfk, u, >fCf, cf, Af, Efg, v, Ì, f< [f<, É, Š, Ì, Ä, ç, 1/2, fpjfk, B-â'è" 2000-â [f, B

fNfŠfbfvf{ [fh, EfvfŠf" f^ [Clipprin

.. fNfŠfbfvf{ [fh, Ì, fef, LfXfg, E, frf, bfgf}fbfv, ð, f{f^f", P, Å, Å^ó, ü, ·, é, ftfg, B

JF for Windows

.. ·, ¶, Ì, É, f%of" f, f€, É'P, Ç, è, ð—, Ä, Í, ß, Ä•s, ð—, È, ·, ¶, Ì, ð, Ì, é, fWf# [fNf, ftfg, B

MS-DOS"Ä—p

ftf@fCf<fofgf% [FBT

.. > [fR [fhf, ofgf% [, Ì, ftg@fCf<" Å, Bftg@fCf<, â•¶, Žš—ñ, a, í, Žm, É•ì, g, µ, Ü, ·, B

fWf# [fN•¶, Ì, JF'93

.. ã<L, u, JF for Windows, v, Ì, f, fŠ, fW, f, í<" Å, B, u, fef, Nf, Rf" v, fOf
%of"fvfŠŽó, Ü, Ì, i, B

fWf# [fN•¶, Ì, JF'93

.. u, "Š, G, ©, «, f, Wf, b, f, N, v, ð, c, n, r" Ä—p, Å—V, Ô, ±, Æ, a, Å, «, Ü, ·, B

fgf%offBfvf#fif< Efpjfk PEG

.. u, fyfO [E, f, Š, fef, B, f, A, v, Æ, ç, x" " [, Ì, É, fpjfk, ð, Š, g'£, µ, 1/2, fpjfk, fQ [f€ B

—, 3, Éfy [fWff [Least

..,í,, ©3kBŽã, ìfy[]fWff[][]ifefLfXfgftf@fCf<•\Ž!f\ftfg[]j, Å, ·□B
ì, ì, ®, ç, PjAfif%o fCfU NOANL
..□u, “ŠG, ©, <f[]fWfbfN□v, ì-â'è, ð%oð,, ½, ß, ì%oð[]f\ftfg□B

NEC PC-9801fvfŠ[]fY—p

fvf“fvf<—š'ì-À~H MZ3

..fAfif[]fO4096□F, ðftf<, É□¶, ©, μ, ½ãY—í, Åfvf“fvf<, È—š'ì-À~HfQ□[f€□B

f[]fWfbfNfpfYf< D-GRAM

..f}fEfX, Å, ·, ×, Ä'€[]ì, Å, «, é□u, “ŠG, ©, <f[]fWfbfN□v□Bf[]fŠfWfjif<-â'è'½□”□B

fgf%o fffBfvftfjif<□EfpfYf< PEG

..□ufyfO□Ef[]fŠfefBfA□v, Æ, ç, x“` “□l, ÈfpfYf<, ðŠg'£, μ, ½fpfYf<fQ□[f€□B

fefLfXfgftf@fCf<

f[]f“f%o fCf“ ,r,e□-□à□u^áŽŸ€³, ì—ö□l□v□A%o¹ŠyfGfbfZfC, È, Ç

, ±, ê, ç, ìf\ftfgfEfffA, ì□Š□Y'n, Å, ·, a□A□Å, àŠmŽÀ, É□Å□V”Å, aŽè, É, í, ç
, é, ì, í□AZ,, ìfz□[f€fy□[fW, È, È, è, Ü, ·□B

<http://www.asahi-net.or.jp/~KU5M-FJI/index.htm>

, » , ê^ÈŠO, Å, í□A[]f\ftfgfEfffA, É, Å, ç, Ä, í□ANIFTY-Serve , ìf%o fCfuf
%o fŠ, É, , è, Ü, ·□B, ±, ç, í•K, , μ, à□Å□V”Å, Å, È, ç, ±, Æ, a, , è, Ü, ·, a□AfQ□[f€, È, ç
FGALAM , ì LIB13, LIB16□iDOS”Å—p/98—p, íLIB5, LIB6□j, â FGALWIN, FWING
, È, Ç□AŽÀ—p[]f\ftfg, í FWINAC , È, Ç, É, , è, Ü, ·□B€Ÿ□öfRf}f“fh, Å %TAB02336
, ðŽw'è, μ, Ä□ACEŸ□ö, μ, Ä, Ý, Ä,, ¾, ¾, ç□B

KU5M-FJI@asahi-net.or.jp
TAB02336@niftyserve.or.jp

„, í, è, É

□@□;‰ñ□A, í, β, Äfnf“fhf<-¼, ðfQ□[f€ , ÌŠ¥
, É•t, ¯, Ä, Ý, Ü, μ, ½□BŽÁ, í, ©, È, è’p, , , ©, μ, ç(^ ^ ;)
, ñ, Å, , ¯, Ç□A□e, μ, Ý, â, , çfCf□□[fW, ÌfQ□[f€ , È, È, é, ©, È, ÆŽv, ç□A, ±, x, ç, x-
¼’O, É, μ, Ä, Ý, Ü, μ, ½□B
□@, ±, ÌfQ□[f€ , Ì“à—e, Í□A□ì, ©, ç, , éfVf“fvf<, È□iftf@f~fRf“Çen, Ì□jSf<ftfQ□[f€
, ÌfpfbfefBf“fO•”•ª, ð”², «□o, μ, ½, à, Ì, È, È, Ä, Ä, ç, Ü, ·□B, ±
, è□A□D, «, ¾, Ä, ½, ñ, Å, , æ, È□B□;‰ñ, Ì□i, ç, Ä, à, » , x, Å, , ª□A“Á, É□jŽ©•ª, Ì—V, Ñ, ½, ç
, à, Ì, ð’f’¼, È□ì, Ä, ½, Ì, Å□AZ©•ª, Å, à, ©, È, éfnf} , Ä, Ä, ç, Ü, ·□B, ±, Ìf
ftfg, ðf_fEf“f□□[fh, μ, ½•û, ª□A“¯ , í, æ, x, ÉŠy, μ, ñ, Å, , è, è, ÍŠð, μ, ç, ÆŽv, ç, Ü, ·□B

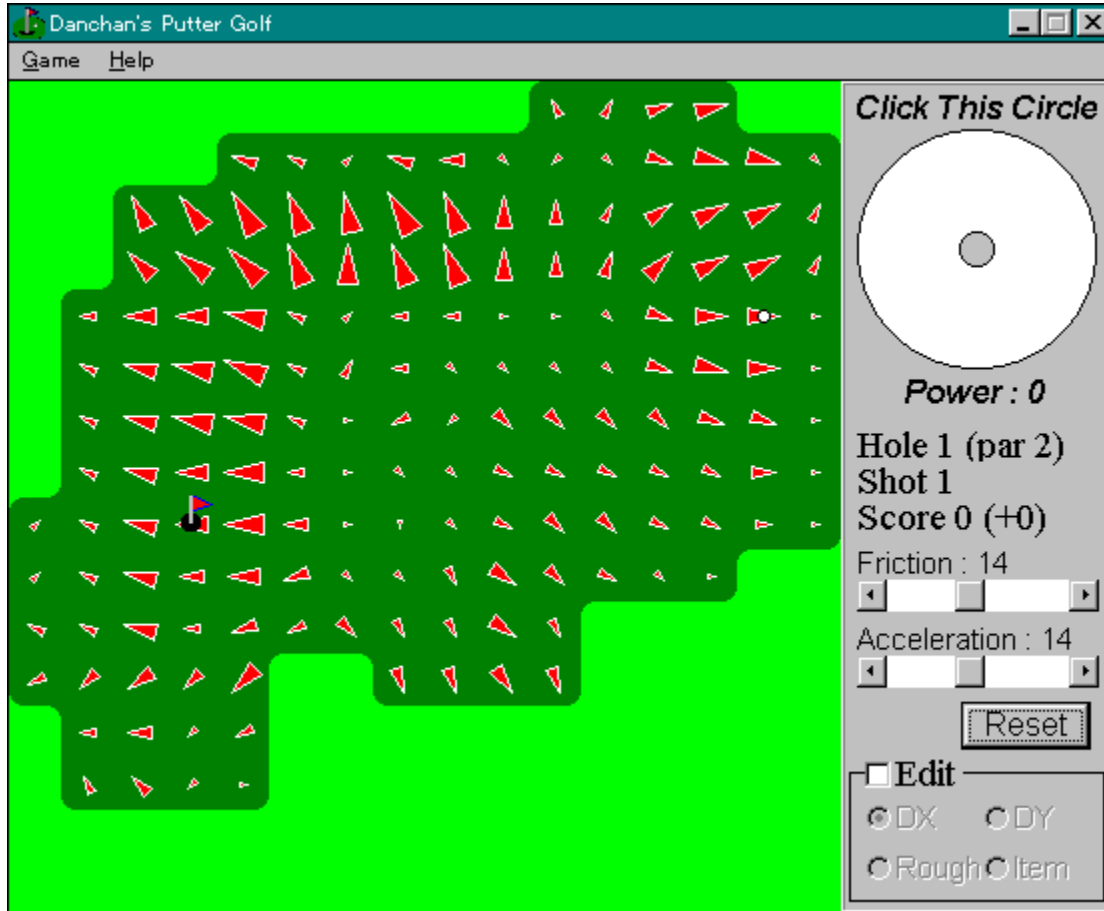
„, à, Á, Æ<Z□p“l, È, „, í, È, μ

□@fOfŠ□[f“ , Ì□A, P, U□~ , P, U, Ìf}fgfŠfbfNfX, Å□\
□~ , ª, è□Af}fgfŠfbfNfX, ª, Æ, ÉÇX, «, Ìff□[f^ , ðŽ□, Ä, Ä, ç
, Ü, ·□BfOfŠ□[f“ , ÌŠp, ðŠÜ, β, éfAf<fSfŠfyf€, ÍŠ®’S, Å, í, È, □AfOfŠ□[f“ , Ì’t, éf
‰oft, ªŽÌ, β, È, Ä, È, ª, Ä, Ä, ç, é□è□†, È□, μ, ¯ , ©, μ, È•ŽÌ, È, È, è, Ü, ·□i, à, Ì, è, ñfQ□[f€
, ÉŽx□á, í, , è, Ü, ¹, ñ□□B
□@, ±, ÌfQ□[f€ , Ì□Á’â, Ì“Á’¥, Å, , éfOfŠ□[f“ , ÌŽ©“®□ì□~fAf<fSfŠfyf€, Ä, , ª□A
□@1., S□~ , S, Ì□³•ûÇ` , ð‰½-†, à□d, È, é, ±, Æ, ÅfOfŠ□[f“ , ÌÇ` , ð□ì, é□B
□@2.fOfŠ□[f“□ã, ÉŽR, â’J, ð□ì, è□AÇÄ□X, Ìf}fgfŠfbfNfX, ª, Æ, ÉŽü^í, Ì□, , ª, ©, çÇX, «, ð
ŽZ□o, ·, é□B
□@, Æ, ç, x□^—□, ð, μ, Ä, ç, Ü, ·□B
□@fVf†fbfg, Ì•û-@, ª“Æ“Á, È, Ì, Ì□AZ,,, Ìfvf□fOf‰of€“\—í•s’« , Ì, ¹, ç
, Å, ·□BÇ³X□AfOfŠ□[f“□ã, É’Á, Å•ûÇü, ð•ŽÌ, , , é□u•□’È, Ì•û-@□v, ð□ì, Ì, Ä, ç
, ½, Ì, Å, , ª□A“i, μ, ©, Ä, ½, Ì, Å, ±, Ì, æ, x, È•û-
@, É, μ, Ü, μ, ½□B, È, ¯□AfVf†fbfgfT□[fNf<’t□S, É□uÇŠ□v, ð<ó, ¯, Ä, , é, Ì, Ì□A, , Ü, èŽã, ç
—í, Å’Á, Å, Æ, Pfhf bfg, à“® , ©, , , ÉfVf†fbfg□” , ¾, ¯□, Ì, Å, μ, Ü, x, ±, Æ, ª, , é, ½, β, Å, ·□B

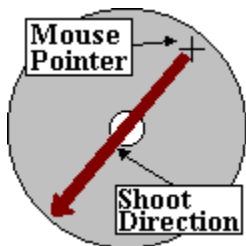
□@, Ì, È, Ý, È□AZ,,, ÍŽÀ□Ü, ÌfSf<ft, í, μ, Ü, ¹, ñ□BfSf<ft, Å—V, Ô, Ì, ÌfQ□[f€
, Ì’t, ¾, ¯, Å, ·□B, à, μ, ©, , , é, Æ□AÇ»ŽÁ, ÌfSf<ft, Æ, í•μ^í<C, ª, Ü, Ä, ½, ^á, x
, ©, à’m, è, Ü, ¹, ñ, ª□A□ufSf<ft, » , Ì, à, Ì□v, Æ, ç, x
, æ, è, p, μ, è□uftf@f~fRf“ , ÌfSf<ftfQ□[f€□v, ðfVf~f...fÇ□[fg, μ, ½, Ä, à, è, È, Ì, Å□A, , Ü, è<
C, É, μ, Ä, ç, Ü, ¹, ñ□B

Ž,,í□u⁻³ĀÈ,É□V,μ,ϕfpf[^]□[f“,Å—V,x,é□vfQ□[f€,É<,ϕ-£—Í,đŠ´,¶,Ä,ϕ
,Ü,·,ì,Å□A□;‰ñ,à,»,ì—á,É,à,ê,È,ϕfQ□[f€,É,È,Á,Ä,ϕ,Ü,·□B

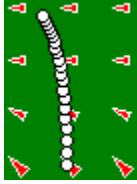
How to play



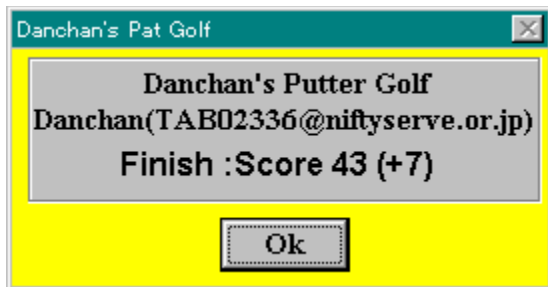
To start "Danchan's Putter Golf", execute (open) "dpgolf.exe". "Danchan's Putter Golf" is a simple putter-golf simulation game for MS-Windows 3.1 / 95 and **this is a freeware**. Your task is to cup-in the ball of each hole. There are 18 holes in one course.



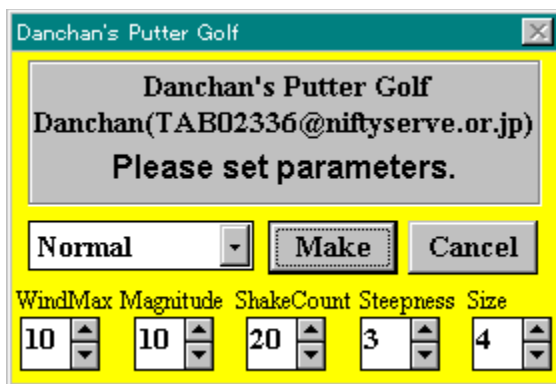
To shoot the ball, Click the 'Shoot circle' at the left-top of the window. The direction to the center of the circle means the direction where you shoot the ball. You can set the power by the distance from the point where you clicked to the center of the circle.



The green slopes, so the ball will turn along the slope. The bigger the inclination triangle is, the steeper the slope is.

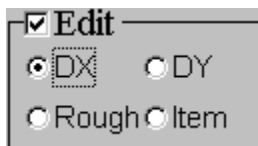


If you finished the course, you can try a new course. (Before making a new course, you are asked if you want to save the course you played.)



To make a new course, set the type of it (Normal, hard, and so on) and push the 'Make' button. you can also set the parameters manually. ('Steepness' parameter has the most influence to the difficulty of the course. Setting 0 at 'Size' editbox means "random-size".) You can also open this dialog box by selecting [\[Game\]](#) -> [\[New\]](#) from the menu.

If you want to save the course, select [\[Game\]](#) -> [\[Save\]](#) from the menu. Then you can load the saved course by selecting [\[Game\]](#) -> [\[Load\]](#) from the menu.



You can edit a hole by checking [\[Edit\]](#) checkbox. You can make green by select "DX" or "DY", erase green by "Rough", and move a cup or a ball by "item" (LeftClick to move a cup and RightClick to move a ball). You can also save the edited course.

* You can change the friction and the acceleration of the ball. Move the scrollbar at the bottom of the window.

